



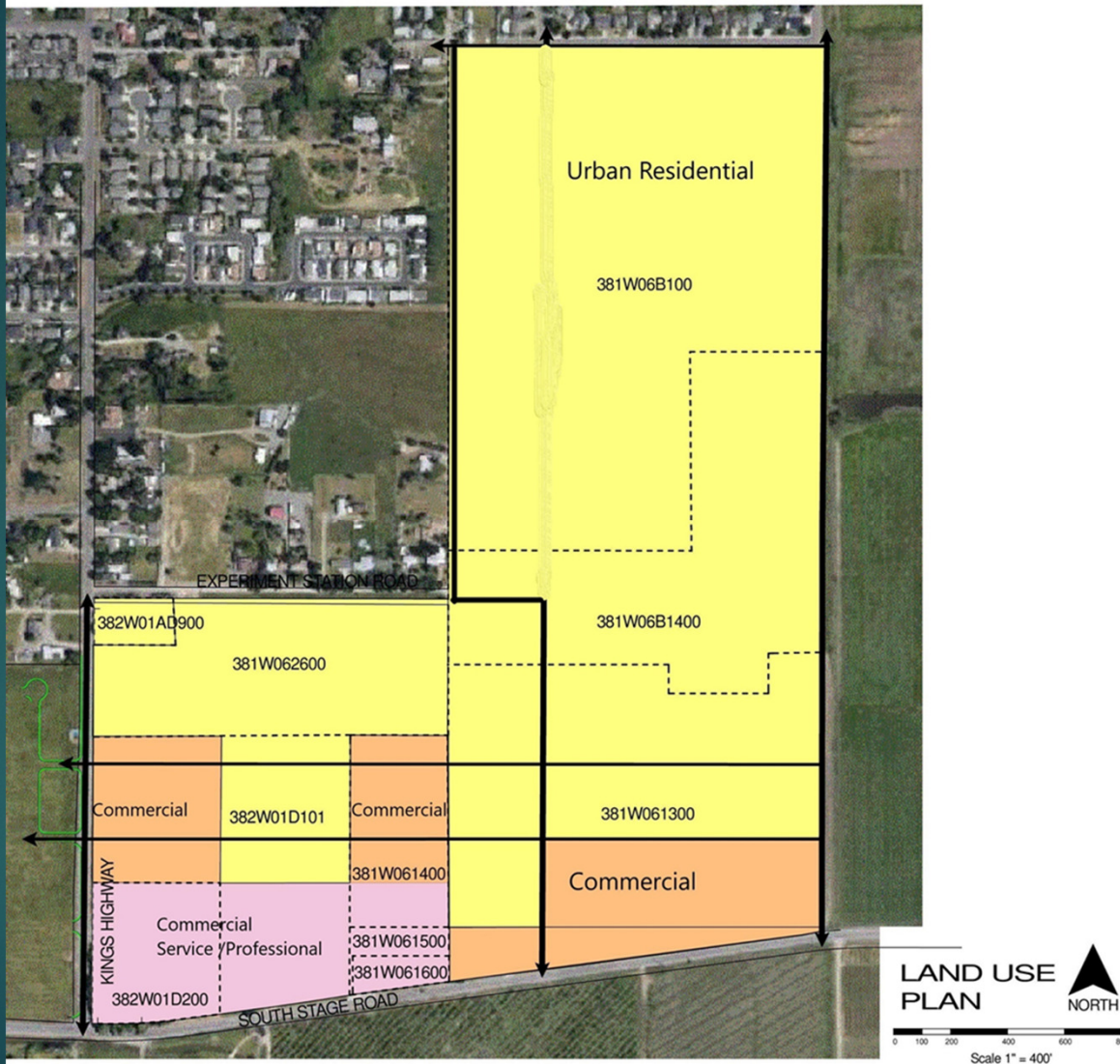
Regional Problem Solving (RPS)

Urban Growth Boundary (UGB)

Planning Units



GENERAL LAND USE PLANNING MD-7B

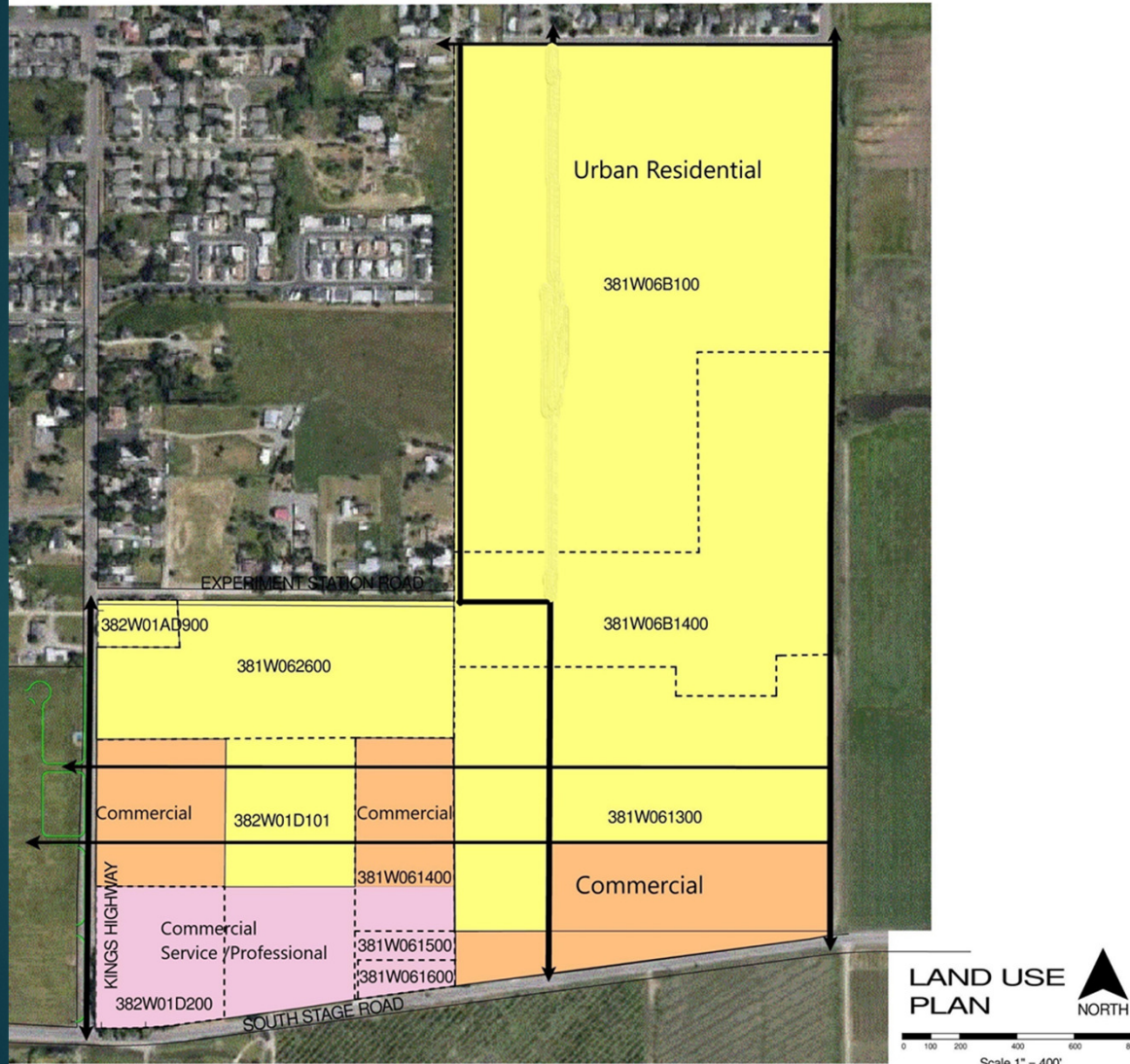


MD-7b
Planning
Unit

Requirements for the MD-7b Planning Unit

- ▶ General Land Use Plan Map (GLUP Map)
 - ▶ Urban Residential (UR)
 - ▶ Commercial (CM)
 - ▶ Commercial / Service Professional (C/SP)

GENERAL LAND USE PLANNING MD-7B



General Land Use Plan Map (GLUP Map)

Urban Residential	110 acres, 77%
Commercial	19 acres, 13%
Commercial / Service Professional	14 acres, 10%
	<hr/> 143 acres

Requirements for the MD-7b Planning Unit

- ▶ 22% of total acreage in the Planning Unit must be Open Space.
- ▶ Minimum residential density of 6.6 dwelling units per acre for new development.
- ▶ Neo-Traditional Development

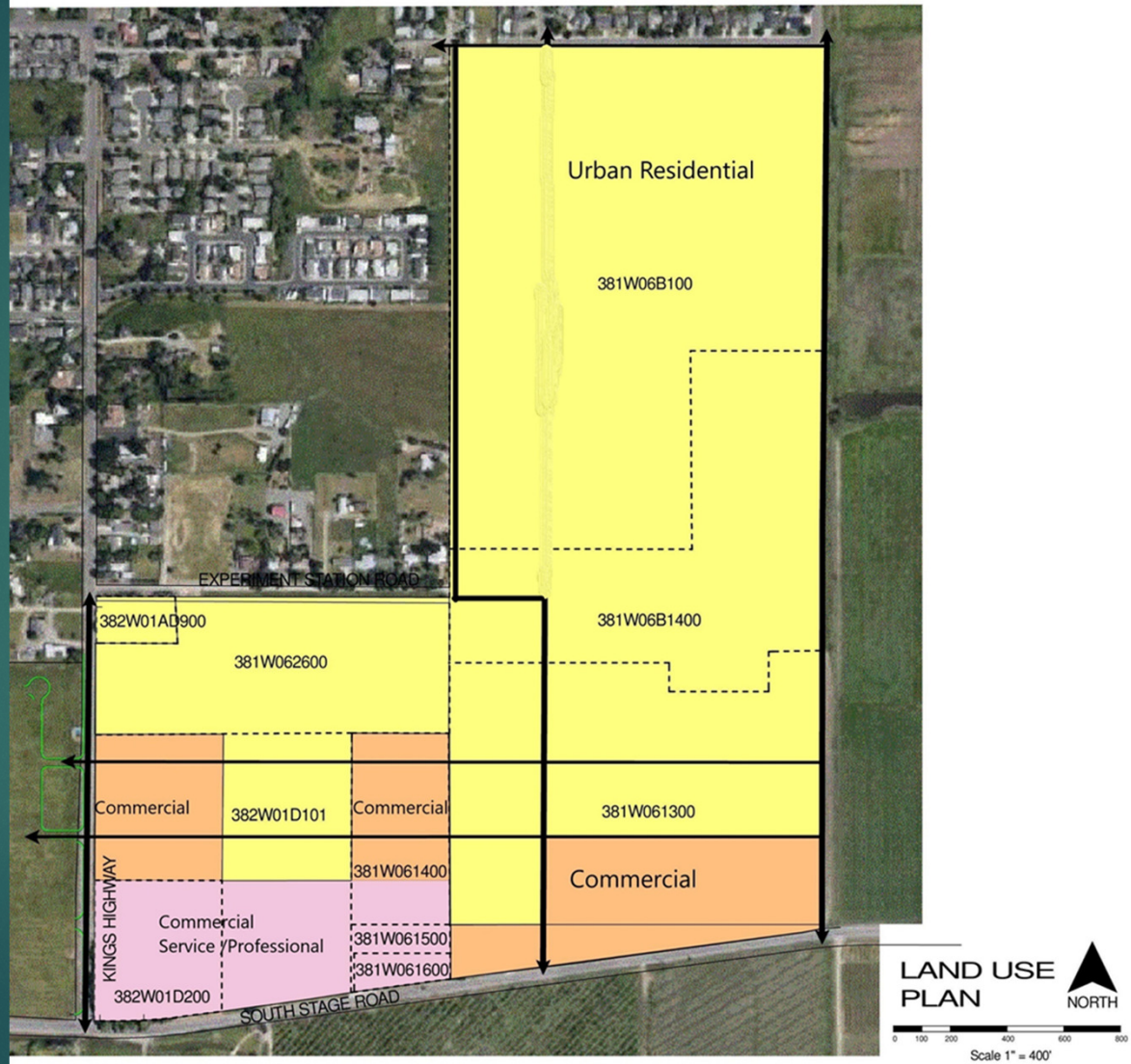
Development Process

- ▶ Planning Unit Application
- ▶ Annexation
- ▶ Subdivision and zone change
- ▶ Construction
- ▶ 2-3 years (minimum...)



Street Layout

GENERAL LAND USE PLANNING MD-7B



scottsinner@yahoo.com

